

# District and School Improvement

The School Improvement process is a mandatory piece in school requirements. This legislation requires all public schools and public school academies to have a school improvement team and a school improvement plan. This plan is to be reviewed and updated annually.

The school improvement process is an organized, ongoing change process where focus consistently centers on improving learning for all students. Ongoing use of data and data analysis in the decision-making process is an important part of school improvement.

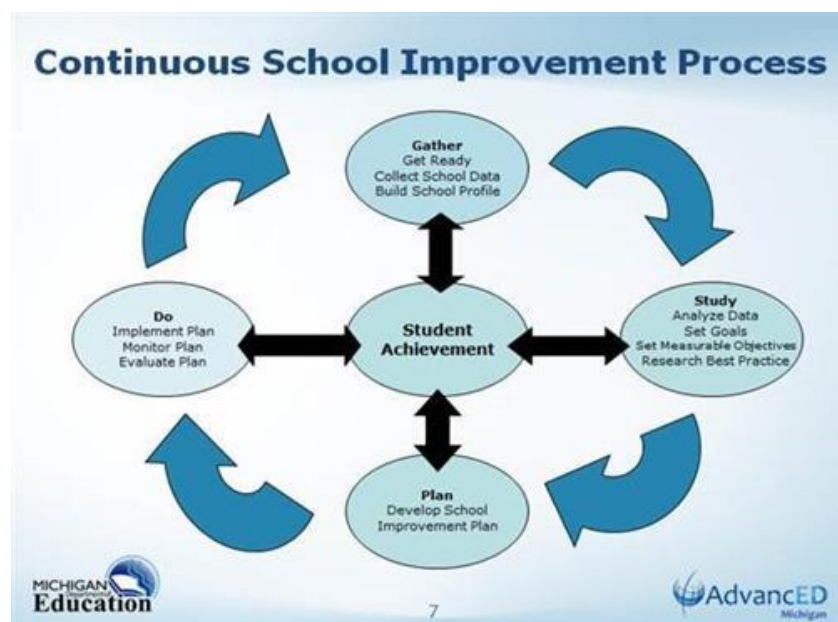
While no paper document can truly and fully capture the essence of a process that is continually changing, a written plan helps recognize efforts and growth in key areas. It also provides a framework for current and future efforts. The written School Improvement Plans and District Improvement Plan is also a tool that can help communicate the philosophy of the school and the identifiable goals that the school and district have in place.

The School and District Improvement Plans are part of an ongoing process and is not intended to be a one-time event. Data obtained at each stage informs the next stage. The process continues over the course of several years until the student achievement goals are accomplished and the achievement gap eliminated.

This process cycle provides the foundation to address school improvement and promote student achievement through a comprehensive and systemic approach consisting of the following main tasks:

1. Gather-collect data and build school profile
2. Study-analyze data, set goals and objectives
3. Plan-develop an Improvement Plan
4. Do-Implement, monitor and evaluation this plan.

The School Improvement Plan is intended to be the vehicle that drives the continuous improvement process.



# District and School Improvement Requirements

## Summary of Requirements

- ✓ Involvement of staff, parents, and community
- ✓ Data planning and analysis
- ✓ Complete a Comprehensive Needs Assessment once every three years
- ✓ Goals focused on student achievement of state content and performance standards
- ✓ Development of research-based strategies that include interventions for improving instruction, parent involvement, staff development, and additional strategies and activities to support at-risk students.
- ✓ Development of an ongoing evaluation plan including assessments and analysis of assessments.

## Summary of State and Federal Required Plan Components

- ✓ A mission statement that defines the school's purpose(s) for educating all students and that is aligned with the District's mission.
- ✓ An aligned curriculum with aligned instruction based on the state standards.
- ✓ A site-based plan development process.
- ✓ A representative planning team, including active roles for parents as part of a defined parent involvement policy.
- ✓ A Comprehensive Needs Assessment (done once every three years) including disaggregated data, which is reviewed, reported, and used in planning.
- ✓ A process to identify eligible student for state and federal programs placements combined with an articulate plan for meeting their needs.
- ✓ High standards and expectations for all students.
- ✓ Effective strategies and activities that are research-based.
- ✓ A needs-based and SIP-based professional development plan developed by (and for) all staff, utilizing research-based instructional strategies. PD driving purpose should align with School Improvement Plan goals, strategies, and activities.
- ✓ On-going program monitoring and data analysis which measures program implementation success.
- ✓ A parent (and community) involvement plan that includes parent education that builds capacity for involvement and that helps parents provide assistance to their children.
- ✓ Coordination efforts for all state and federal programs for alignments and cohesiveness.
- ✓ SIP/DIP revisions based upon data and analysis of data.

# District and School Improvement Essential Components

## Gather

Get ready, collect school data, and build school profile:

1. Establish the School Improvement Team including administrators, teachers, support staff, and parents/community members/stakeholders.
2. Gather data including assessment scores, grade, student information, survey data, and disaggregated results when appropriate. Analyze data using techniques such as significance tests, gap analysis, graphs, and curriculum/pacing guides.
3. Ensure all participants and stakeholders have a clear mission and vision which supports learning for all.

## Study

Set goals, set measurable objectives, and research best practices:

1. Use gathered data and data analysis to set clearly defined, measurable goals and explain why goals were selected.
2. Identify criteria for success that include specific, short term monitoring procedures that help the SIT and staff determine success towards realizing goals.

## Plan

Develop School Improvement Plan:

1. All of the above information and decisions are written into the School Improvement Plan and/or identified as methods of monitoring programs.

## Do

Implement Plan, Monitor Plan, Evaluation Plan:

1. Implement the SIP with fidelity and ensure procedures are in place to monitor fidelity of implementation.
2. Frequently monitor the success of implementation/strategies/activities through observation and data analysis.
3. Revise the Plan as needed.